

# Teaching Pendant **TB-01**



XSEL

SSEL

ASEL

PSEL

TTA

PCON-CA

ACON

SCON-CA

MSEP

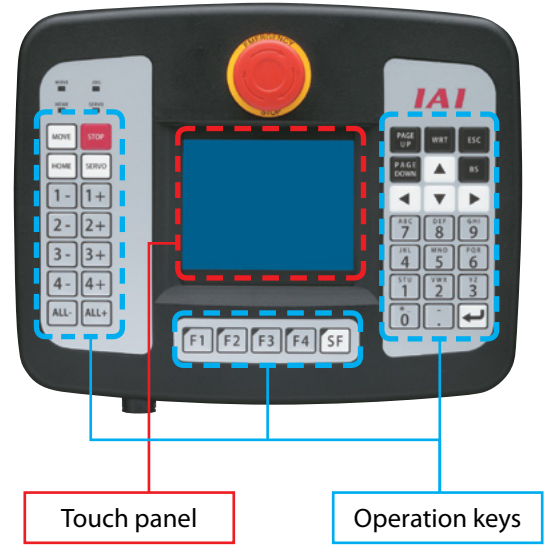
MSCON

# All Your Controllers Can Be Operated with One Unit

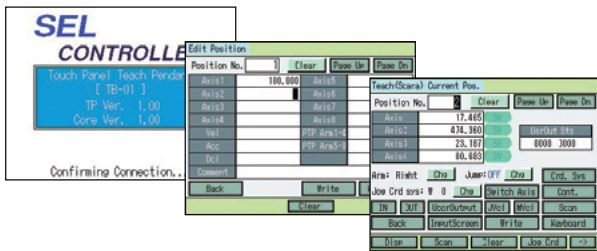
\* Excluding some old controllers.

## Features

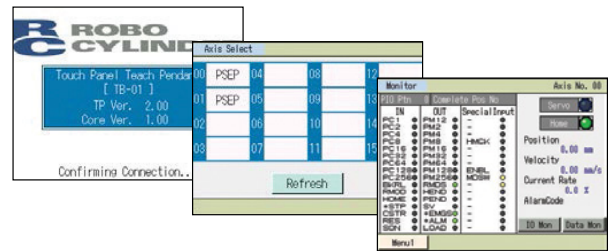
- Supporting both programmable controllers and position controllers
- Easy-to-use design combining a touch panel and keys
- 3.5" full-color touch panel
- SEL programs can be edited
- Programs/data can be saved to SD cards
- Calendar function



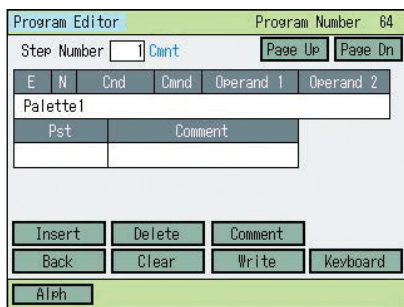
#### ■ Operation Screens



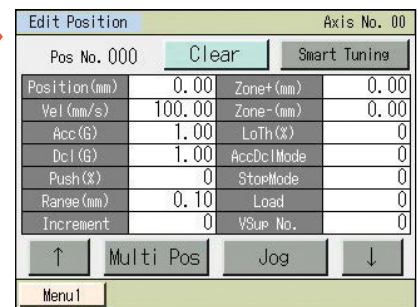
#### ■ Operation Screens



Programmable data



Position data



## Types

The TB-01 supports all of the following controllers, but you need to select an appropriate cable for each controller.

### ● Teaching Pendant + Cable (Teaching Pendant Only: TB-01-N-ENG)

Model number	Teaching pendant kit model numbers	Supported controllers
TB-01-SC-ENG	TB-01-N-ENG + ① CB-TB1-C050	Position controller: PCON-CA, ACON, SCON-CA, PSEP, ASEP, DSEP, MSEP, MSCON
	+ ② CB-TB1-X050-JS : CB-TB1-X050 + CB-SEL-SJS002	Programmable controller: PSEL, ASEL, SSEL, XSEL-K/P/Q/R/S, TT, TTA
TB-01-C-ENG	TB-01-N-ENG + ① CB-TB1-C050	Position controller: PCON-CA, ACON, SCON-CA, PSEP, ASEP, DSEP, MSEP, MSCON
TB-01-S-ENG	TB-01-N-ENG + ③ CB-TB1-X050	Programmable controller: XSEL-K/P/Q/R/S, TT, TTA
TB-01-SJ-ENG	TB-01-N-ENG + ② CB-TB1-X050-JS : CB-TB1-X050 + CB-SEL-SJS002	Programmable controller: PSEL, ASEL, SSEL, XSEL-K/P/Q/R/S, TT, TTA

### ● Teaching Pendant Only (No Cable)

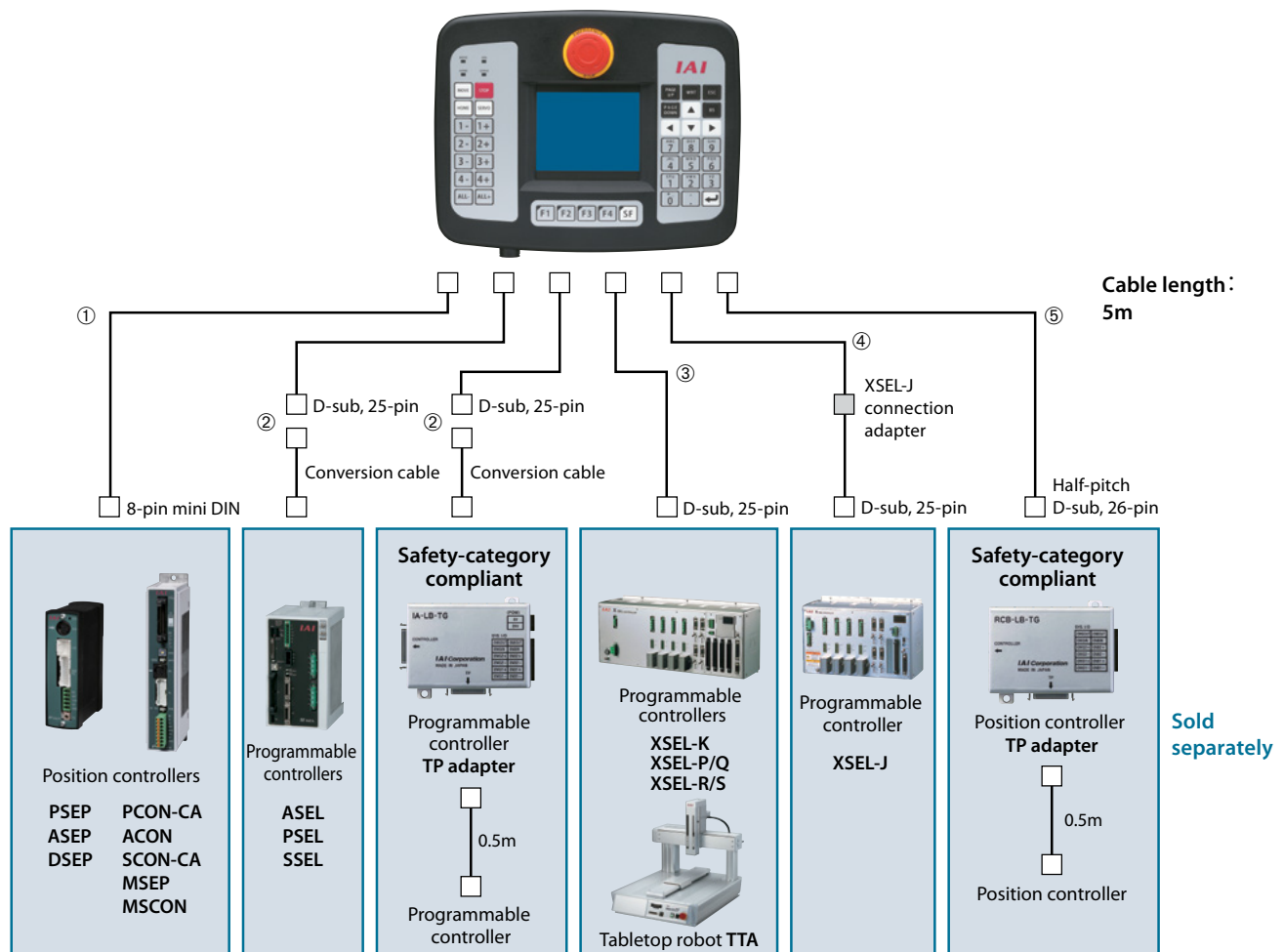
Model number	Description
TB-01-N-ENG	Standard specification
TB-01D-N-ENG	Deadman switch, left-side mount specification (standard) [for Safety-category compliant system]
TB-01DR-N-ENG	Deadman switch, right-side mount specification [for Safety-category compliant system]

### ● Cable Only

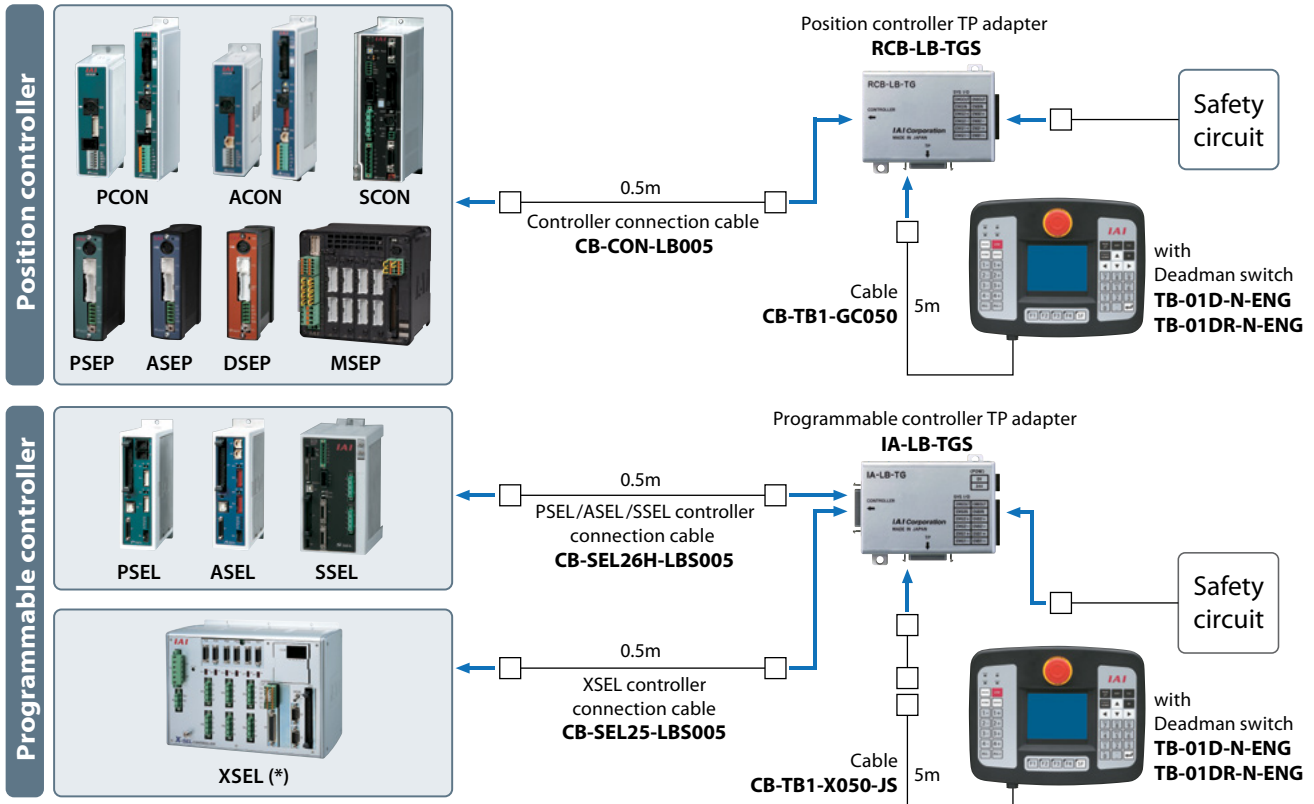
Model number	Description	Supported controllers
CB-TB1-C050	① Position controller cable	Position controller
CB-TB1-X050-JS	② Programmable controller cable + conversion cable Programmable controller TP adapter cable [Safety-category compliant]	PSEL, ASEL, SSEL, XSEL-K/P/Q/R/S, TT, TTA
CB-TB1-X050	③ Programmable controller cable	XSEL-K/P/Q/R/S, TT, TTA
CB-TB1-XJ050	④ Programmable controller cable	XSEL-J
CB-TB1-GC050	⑤ Cable between teaching pendant and TP adapter [Safety-category compliant]	Position controller

Note) The cable in ② consists of the cable in ③ and a conversion cable (CB-SEL-SJS002).

\* The cable in ② can be used with any controller for which the cable in ③ is specified.



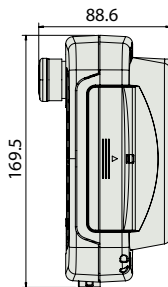
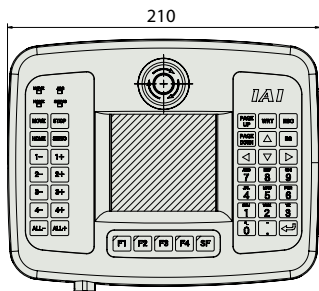
**Safety-category Compliant**



**Specifications**

Rated voltage	24V DC
Operating voltage range	21.6 to 26.4V DC
Power consumption	3.6 W or less (150 mA or less)
Ambient operating temperature	0 to 50°C
Ambient operating humidity	20 to 85% RH (non-condensing)
Ambient storage temperature	-20 to 60°C
Ambient storage humidity	10 to 85% RH (non-condensing)
Product life	5 years (if operated 24 hours a day at ambient temperature of 40°C; excluding the battery and LCD)
LCD life	20,000 hours (at ambient temperature of 25°C)
Vibration durability	10 to 55 Hz (1 minute periods), double amplitude 0.75 mm, 10 minutes each in X/Y/Z directions
Impact durability	147 m/s <sup>2</sup> , 11 msec, 4 times each in X/Y/Z directions
Environmental resistance	IP40 (in initial state)
Weight	507g (TB-01-N; teaching pendant only)

**External Dimensions**



(Unit: mm)

**Option**

- Strap: Model number **STR-1**



**IAI America, Inc.**

Headquarters: 2690 W. 237th Street, Torrance, CA 90505 (800) 736-1712  
 Chicago Office: 110 East State Parkway, Schaumburg, IL 60173 (800) 944-0333  
 Atlanta Office: 1220 Kennestone Circle, Suite 108, Marietta, GA 30066 (888) 354-9470

**www.intelligentactuator.com**

The information contained in this product brochure may change without prior notice due to product improvements.

**IAI Industrieroboter GmbH**

Ober der Röth 4, D-65824 Schwalbach am Taunus, Germany

**IAI Robot (Thailand), Co., Ltd.**

825 PhairojKijja Tower 12th Floor, Bangna-Trad RD.,  
 Bangna, Bangna, Bangkok 10260, Thailand

